

Technical Specifications

Natufia Kitchen Garden v2.0 [metric, (imperial)]



TECHNICAL DETAILS

DIMENSIONS	L 593 (23.3) x W 590 (23.2) x H 2019 (79.5)
WEIGHT	Standalone weight 160 kg (352.74 lbs) Operational weight 270 kg (595.25 lbs)
MATERIALS	Stainless steel, glass, PP, HDPE, PS
POWER SUPPLY	Input 100-240 V 50/60 Hz US/EU/UK power plug

ENERGY USAGE

AVERAGE TOTAL ANNUAL CONSUMPTION	1,500 kWh
AVERAGE LED LAMPS ANNUAL CONSUMPTION	1,300 kWh
POWER CONSUMPTION IN OFF MODE	25 W
POWER CONSUMPTION IN ON MODE	325 W
MAIN FUSE	3 A
INTERNAL VOLTAGE	24 V

WATER USAGE

MONTHLY WATER CONSUMPTION	200 L (52.83 gal)
TANK SIZE	40 L (10.56 gal)
WATER / DRAINAGE CONNECTION	Machine pipe \varnothing M 3/8; Converter \varnothing F 1/2 BSP

PLANT GROWTH MAIN DATA

AMBIENT EXT. TEMPERATURE	18°C - 32°C (64°F - 82°F)
PP POTS FOR PLANTS	32
NURSERY CAPACITY	40 seed pods
CARTRIDGE CONSUMPTION	1 refill every 3 months
PLANT GROWTH TIME	10 to 140 days

CONTROL & ALERT SYSTEM

REMOTE (USER / SERVICE CENTER)	Cloud access through WiFi connection
UNIT	Touch screen

INSTALLATION OPTIONS

MACHINE DELIVERED WITH WHEELS (DEFAULT) OR FEET	Upon order
DOOR	Right or left pening upon order

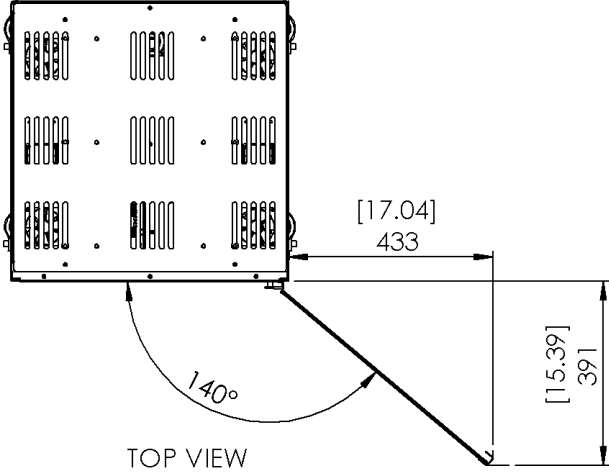
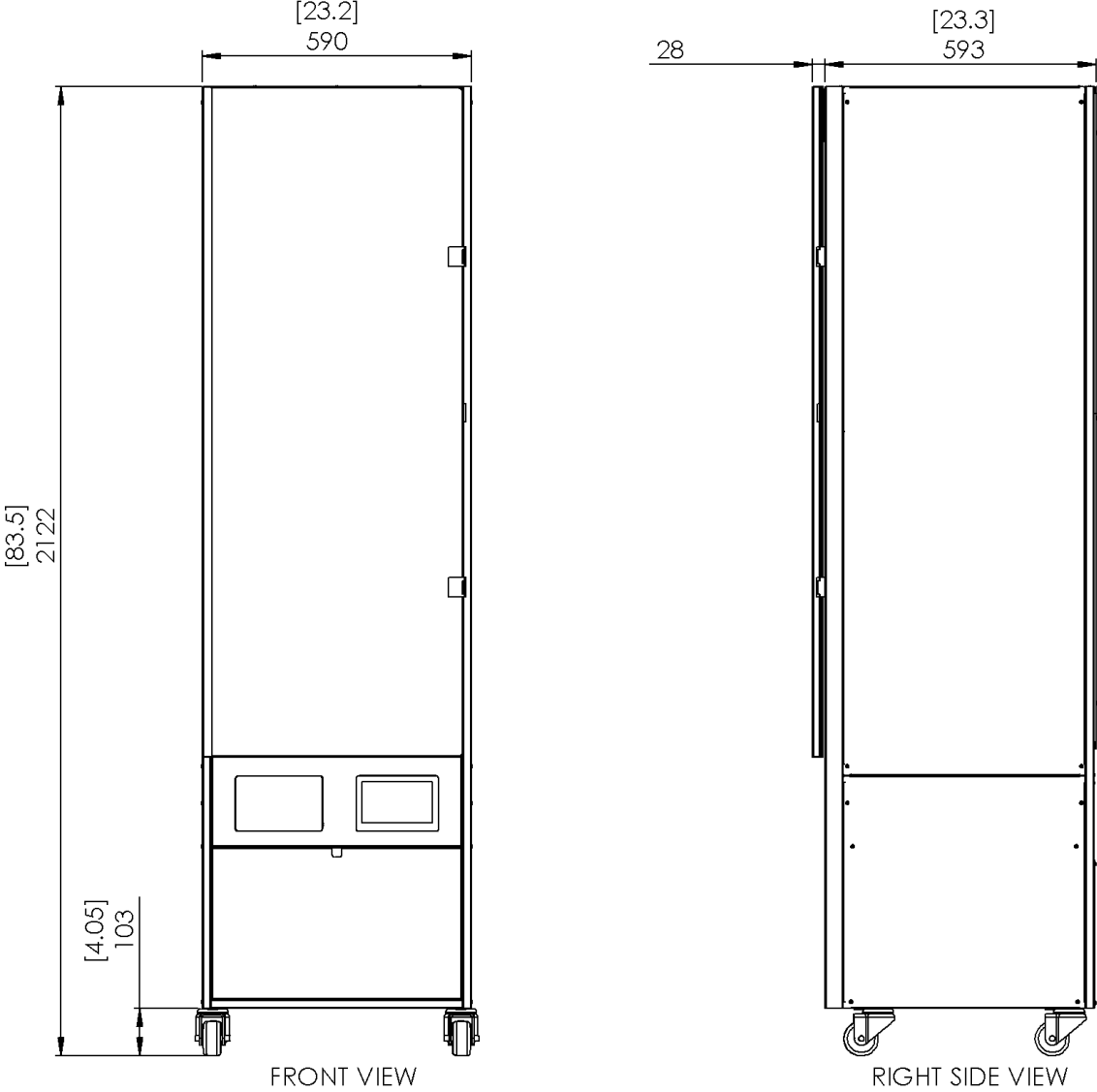
MAINTENANCE

CLEANING	Quarterly / Yearly cleaning
NOISE EMISSION	~ 40 dB

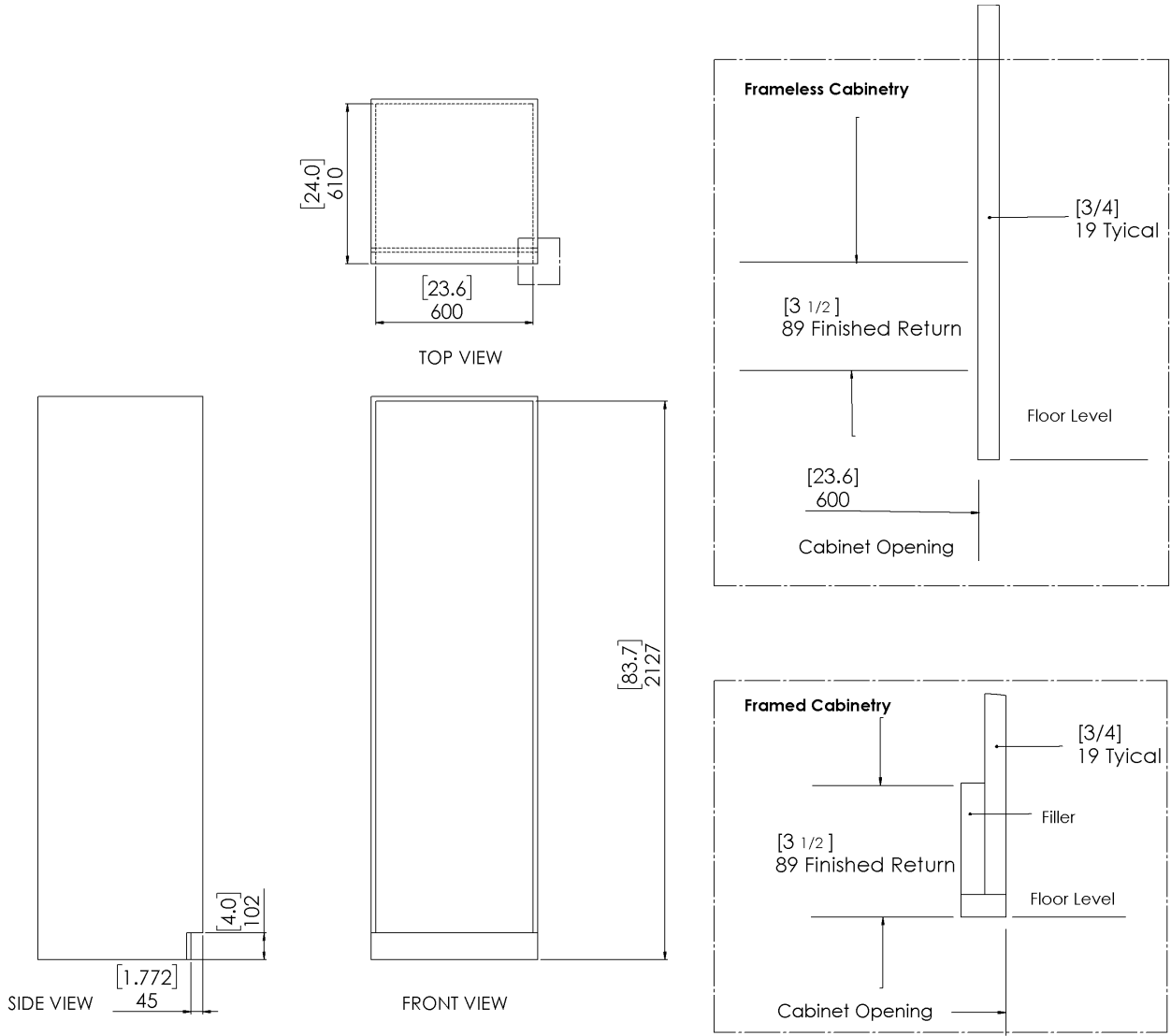
OTHER

VENTILATION	Silent / Inside fans / From the top
MUSIC	Playlists: Nature Sounds / Classical / Ambient

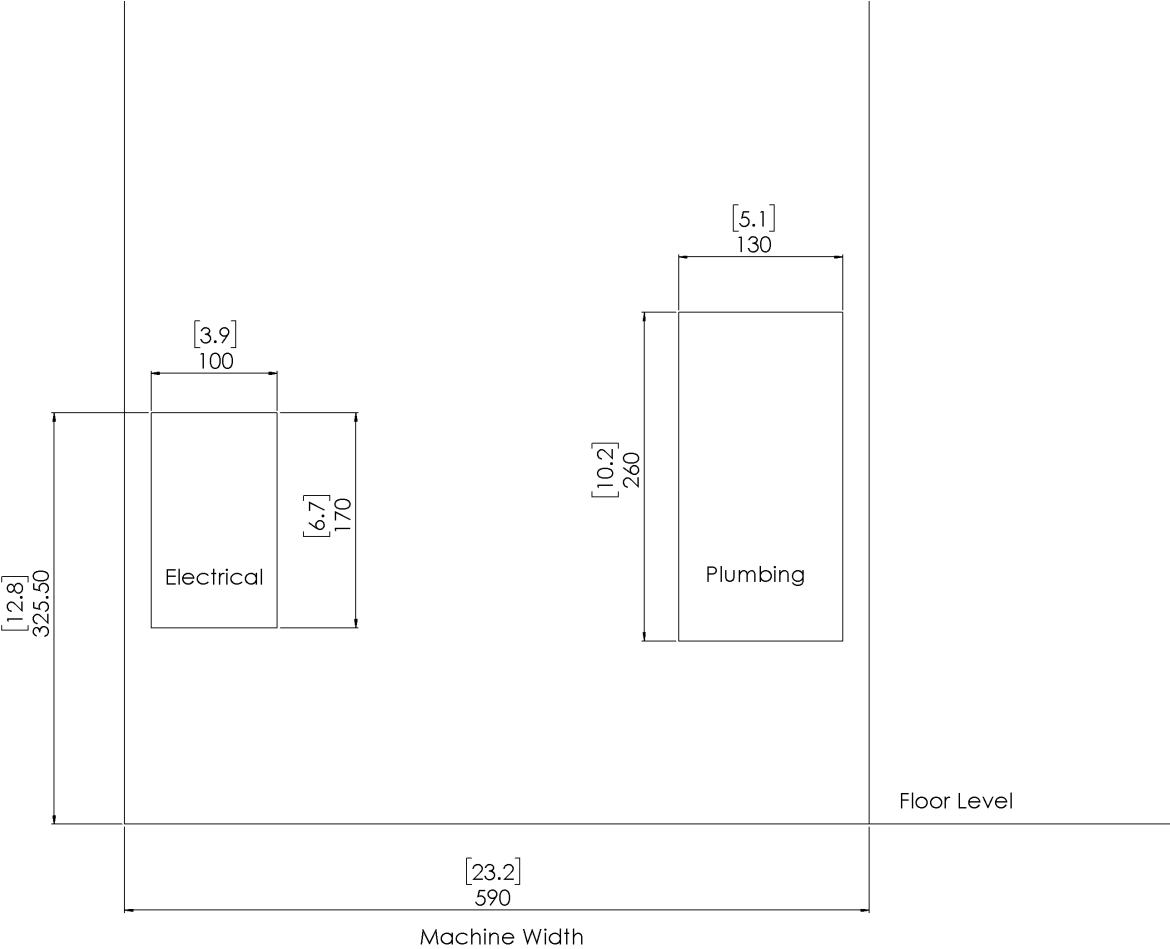
Machine Dimensions



Cabinet Dimensions



Electrical and Plumbing



FRONT VIEW